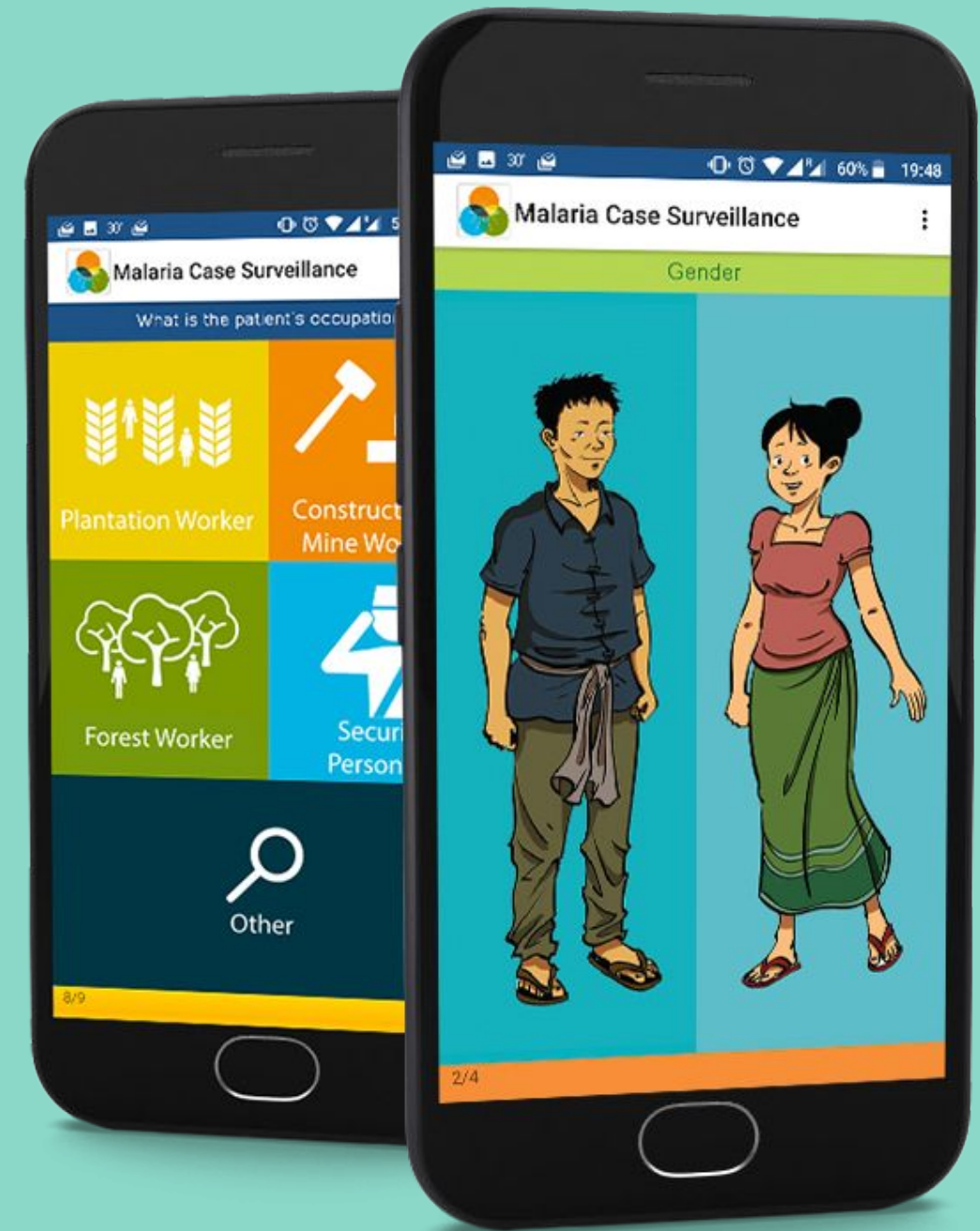


# EyeSeeTea

## Hosting & Support Plans



DHIS2 the easy way

# EyeSeeTea Hosting Plans

Instance type	Play & Test	Test & Work	Work & PROD	What a PROD	Separate DB
Purpose	Testing or play environments	Testing or low resources PROD	PROD environments for medium orgs	PROD environments for intensive use and/or multinational projects	Separate instance to store a DB to allow horizontal scaling
CPU	2	4	8	16	8
RAM	8GB	16GB	32GB	64GB	32GB
Storage	200GB	200GB	200GB	200GB	200GB
Price(monthly)	100€	150€	300€	600€	300€
Price (yearly)	75€	125€	200€	400€	250€



# EyeSeeTea Support Plans

Plan type	Minimum	Basic	Medium	PRO
SLA	24/5 support with 3-days response time	24/5 support with 3-days response time	24/5 support with 2-days response time	24/5 support with 12-hours response time
Hours (monthly)	10	20	40	80
Transfer Hours	50%	0	10%	25%
Price (monthly) 3 months contract		1932€	3 864 €	7 728 €
Price (monthly) 6 months contract		1775€	3 549 €	7 098 €
Price (monthly) 9 months contract		1575€	3 371 €	6 300 €
Price (monthly) 1 year contract	830€	1617€	3 234 €	6 468 €



# EyeSeeTea Support Plan Extras

Extra	Rate
Hour	90 €
20 hours bucket	1575 €
40 hours bucket	3145 €


Hours can be used for System Administration, Training, Web, Consulting, Management and Support


Extras to be ordered at least 1 month in advance



**Let's change the world  
together**



 [eyeseetea.com](http://eyeseetea.com)

 [hosting@eyeseetea.com](mailto:hosting@eyeseetea.com)